

# Polaris - Comfort DATASHEET

JUNHO 2013

Tel: (+351) 21 843 64 00  
Fax: (+351) 21 843 64 09  
geral@bhb.pt [www.bhb.pt](http://www.bhb.pt)



## POLARIS Touch Panel 5.7"

### Features

- LED technology
- Higher screen resolution
- Touchscreen
- Processor up to 1.6 GHz
- Remote desktop solution
- Presentation of HTML pages
- Direct connection in hazardous areas
- Option of Windows 7®
- Integrated keyboard customisation

### Description

The POLARIS Touch Panel 5.7" is an innovative further development of the POLARIS Panel PCs 5.7".

High-resolution displays with LED technology and touchscreen for intuitive as well as comfortable operation are available now in the standard variant.

State-of-the-art LED display technology ensures the optimum contrast even with a large viewing angle.

The proven LX800 offers sufficient computer capacity for presenting HTML pages or functioning as a remote client.

Of course, here too the user can work with the latest "BMS-Graf-pro" Runtime 7 under Windows® XP Embedded, for example for the transmission of projects over the Ethernet, the use of graphics lists or an integrated user administration.

For higher computer capacities there is an option of a highly efficient Intel® Atom™ with 1.6 GHz.

To allow optimum operation, the keyboard layout can be adjusted by software to suit the Windows®, BMS-Graf-pro 7, Siemens WinCC flexible®, RS View® user software.

Allows a high-performance visual display and operation of the processes directly on site.

The front-panel fitting makes mounting easy. On request, the devices are also available as turn-key system solutions in a stainless steel enclosure for wall, floor or ceiling mounting.

An intrinsically safe USB interface is available for a USB Ex i memory stick. Intrinsically safe input devices can be connected also.

### Explosion protection

#### Ex protection type

**ATEX** Ex II 2G Ex db eb qb [ib op pr] IIC T4  
Ex II 2D Ex tb IIIC T120°C IP 6X

#### Certification

IBExU 05 ATEX 1117 X

**IECEX** Ex db eb qb [ib] IIC T4  
Ex tb IIIC T120°C IP 6X

#### Certification

IECEX IBE 11.0007 X

#### Further approvals

INMETRO, GOST-R

#### Protection class

IP 65 (front)  
IP 54 (back)

### Technical data

#### Construction

Front-panel fitting

#### Display

- 5.7" TFT graphic display
- 262,144 colours
- Resolution VGA 640 x 480 pixels
- Brightness 700 cd/m²
- Visible surface approx. 115 x 86 mm
- Contrast 800:1
- Touchscreen (resistive)

#### Background lighting

- LED technology
- Service life approx. 50,000 hours (at +25 °C)

#### Computer capacity

- LX800 processor, 500 MHz  
Compact Flash 4 GB
- Intel® Atom™ N270, 1.6 GHz optional  
16 GB HD

#### Operating system

- Windows® XP Embedded (pre-installed)
- Windows® XP Professional (optional)

#### Keyboard (short-stroke keys)

- alphanumeric key block
- 4 cursor keys
- 6 special keys
- 10 function keys able to be labelled with LEDs

#### Interfaces (basic version)

- 1 x Ex e Ethernet 100/10BaseT (option of optical fibres)
- 1 x Ex e RS422
- 1 x Ex i USB for Ex i memory stick
- 1 x Ex i PS/2 for intrinsically safe mouse

#### Dimensions (width x height x depth)

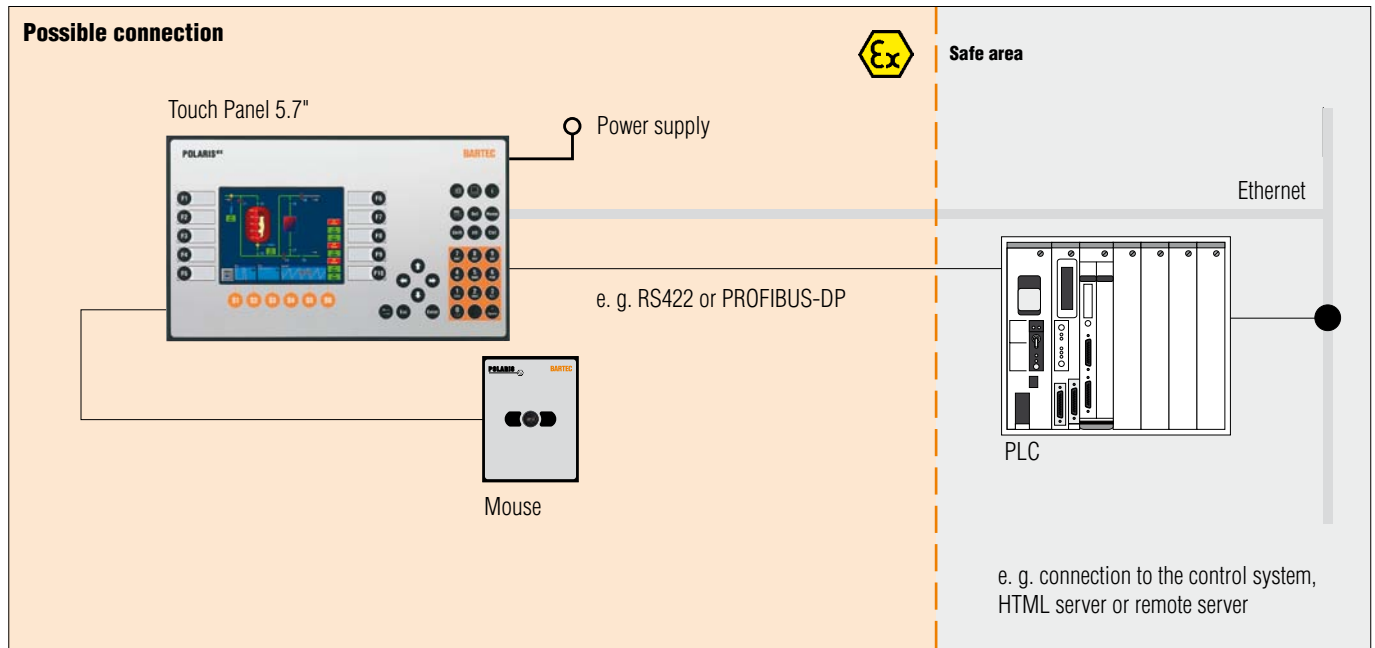
335 mm x 199 mm x approx. 130 mm

#### Wall cut-out

321 mm x 179 mm + 0.5 mm

#### Weight

approx. 10 kg



**Power supply**

DC 24 V  $\pm$  10 %

**Max. power consumption**

$P_{max} < 30$  W

**Permissible ambient temperatures**

Storage -20 °C to +50 °C  
Operation 0 °C to +50 °C

**Variant**

Operation -20 °C to +50 °C  
on request (without external heating)

**Relative air humidity**

5 to 95 % non-condensing

**Vibration**

0.7 G/1 mm; 5 Hz - 500 Hz pulse in  
all 3 axes

**Shock**

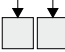
15 G/11 ms pulse in all 3 axes

**Material**

Front Polyester foil on  
anodised aluminium plate  
(conditionally UV-resistant)  
Back bichromated sheet steel

**Selection chart**

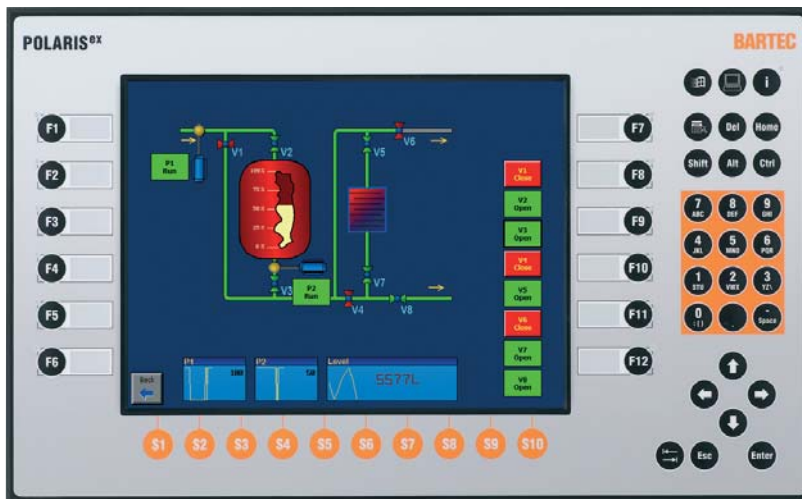
Version	Interfaces	Code no.
Touch Panel 5.7"	RS422	<b>00</b>
	BARTEC PROFIBUS-DP	<b>02</b>
	RS232	<b>09</b>
	TTY	<b>11</b>
	BARTEC PROFIBUS-DP, Ex d-USB	<b>33</b>
	Further Interface combinations on request	<b>XX</b>

➔ **Complete order no. 17-71V1-A0**  **/X000**

Please insert correct code.

Technical data subject to change without notice.

You will find the accessories with order details on the accessories pages.



## POLARIS Touch Panel 10.4"

### Features

- LED technology
- Higher screen resolution
- Touchscreen
- Processor up to 1.6 GHz
- Remote desktop solution
- Presentation of HTML pages
- Direct connection in hazardous areas
- Option of Windows® 7
- Integrated keyboard customisation

### Description

The POLARIS Touch Panel 10.4" is an innovative further development of the POLARIS Panel PCs 10.4".

High-resolution displays with LED technology and touchscreen for intuitive as well as comfortable operation are available now in the standard variant.

State-of-the-art LED display technology ensures the optimum contrast even with a large viewing angle.

The proven LX800 offers sufficient computer capacity for presenting HTML pages or functioning as a remote client.

Of course, here too the user can work with the latest "BMS-Graf-pro" Runtime 7 under Windows® XP Embedded, for example for the transmission of projects over the Ethernet, the use of graphics lists or an integrated user administration.

For higher computer capacities there is an option of a highly efficient Intel® Atom™ with 1.6 GHz.

To allow optimum operation, the keyboard layout can be adjusted by software to suit the Windows®, BMS-Graf-pro 7, Siemens WinCC flexible®, RS View®

Allows a high-performance visual display and operation of the processes directly on site.

The front-panel fitting makes mounting easy. On request, the devices are also available as turn-key system solutions in a stainless steel enclosure for wall, floor or ceiling mounting.

An intrinsically safe USB interface is available for a USB Ex i memory stick. Intrinsically safe input devices can be connected also.

### Explosion protection

#### Ex protection type

**ATEX** Ex II 2G Ex db eb qb [ib op pr] IIC T4  
Ex II 2D Ex tb IIIC T120°C IP 6X

#### Certification

IBExU 05 ATEX 1117 X

#### IECEx

Ex db eb qb [ib] IIC T4  
Ex tb IIIC T120°C IP 6X

#### Certification

IECEx IBE 11.0007 X

#### Further approvals

INMETRO, GOST-R

#### Protection class

IP 65 (front)

IP 54 (back)

### Technical data

#### Construction

Front-panel fitting

#### Display

- 10.4" TFT graphic display
- 262,144 colours
- Resolution SVGA 800 x 600 pixels
- Brightness 400 cd/m²
- Visible surface approx. 211 x 158 mm
- Contrast 700:1
- Touchscreen (resistive)

#### Background lighting

- LED technology
- Service life approx. 50,000 hours (at +25 °C)

#### Computer capacity

- LX800 processor, 500 MHz
- Compact Flash 4 GB
- Intel® Atom™ N270, 1.6 GHz option
- 16 GB HD

#### Operating system

- Windows® XP Embedded (pre-installed)
- Windows® XP Professional (optional)

#### Keyboard (short-stroke keys)

- Alphanumeric key block
- 4 cursor keys
- 10 special keys
- 12 function keys able to be labelled with LEDs

#### Interfaces (basic version)

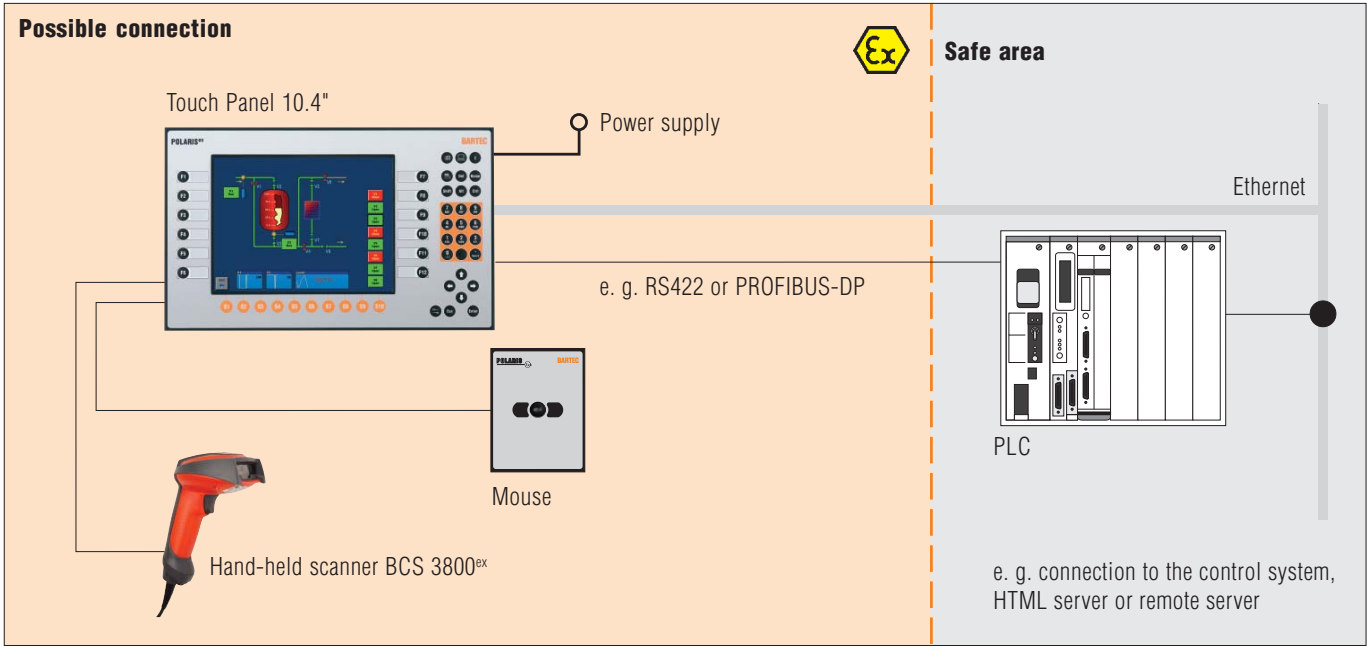
- 1 x Ex e Ethernet 100/10BaseT (option of optical fibres)
- 1 x Ex e RS422
- 1 x Ex i USB for Ex i memory stick
- 1 x Ex i PS/2 for intrinsically safe mouse

#### Optional interfaces

- 1 x Ex i Supply module for hand-held scanners

#### Dimensions (width x height x depth)

400 mm x 246 mm x approx. 130 mm



**Wall cut-out**  
386 mm x 226 mm + 0.5 mm

**Weight**  
approx. 14 kg

**Power supply**  
DC 24 V ± 10 %

**Max. power consumption**  
 $P_{max} < 30 \text{ W}$

**Permissible ambient temperatures**  
Storage -20 °C to +50 °C  
Operation 0 °C to +50 °C

**Variant**  
Operation -20 °C to +50 °C  
on request (without external heating)

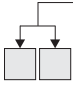
**Relative air humidity**  
5 to 95 % non-condensing

**Vibration**  
0.7 G/1 mm; 5 Hz - 500 Hz pulse in all 3 axes

**Shock**  
15 G/11 ms pulse in all 3 axes

**Material**  
Front Polyester foil on anodised aluminium plate (conditionally UV-resistant)  
Back bichromated sheet steel

Selection chart		
Version	Interfaces	Code no.
Touch Panel 10.4"	RS422	00
	BARTEC PROFIBUS-DP	02
	RS422, supply module for hand-held scanners	04
	BARTEC PROFIBUS-DP, supply module for hand-held scanners	06
	RS232	09
	TTY	11
	RS232, supply module for hand-held scanners	13
	TTY, supply module for hand-held scanners	15
	BARTEC PROFIBUS-DP, Ex d-USB	33
	Further Interface combinations on request	XX

➔ **Complete order no. 17-71V1-90**  **/X000**

Please insert correct code.  
Technical data subject to change without notice.  
You will find the accessoires with order details on the accessories pages.



## POLARIS Touch Panel 12.1"

### Features

- LED technology
- Higher screen resolution
- Touchscreen
- Processor up to 1.6 GHz
- Remote desktop solution
- Presentation of HTML pages
- Direct connection in hazardous areas
- Option of Windows® 7
- Integrated keyboard customisation

### Description

The POLARIS Touch Panel 12.1" is an innovative further development of the POLARIS Panel PCs 12.1".

High-resolution displays with LED technology and touchscreen for intuitive as well as comfortable operation are available now in the standard variant.

State-of-the-art LED display technology ensures the optimum contrast even with a large viewing angle.

The proven LX800 offers sufficient computer capacity for presenting HTML pages or functioning as a remote client.

Of course, here too the user can work with the latest "BMS-Graf-pro" Runtime 7 under Windows® XP Embedded, for example for the transmission of projects over the Ethernet, the use of graphics lists or an integrated user administration.

For higher computer capacities there is an option of a highly efficient Intel® Atom™ with 1.6 GHz.

To allow optimum operation, the keyboard layout can be adjusted by software to suit the Windows®, BMS-Graf-pro 7, Siemens WinCC flexible® and RS View® user software.

Allows a high-performance visual display and operation of the processes directly on site.

The front-panel fitting makes mounting easy. On request, the devices are also available as turn-key system solutions in a stainless steel enclosure for wall, floor or ceiling mounting.

An intrinsically safe USB interface is available for a USB Ex i memory stick. Intrinsically safe input devices can be connected also.

### Explosion protection

#### Ex protection type

**ATEX** Ex II 2G Ex db eb qb [ib op pr] IIC T4  
Ex II 2D Ex tb IIIC T120°C IP 6X

#### Certification

IBEXU 05 ATEX 1117 X

#### IECEx

Ex db eb qb [ib] IIC T4  
Ex tb IIIC T120°C IP 6X

#### Certification

IECEx IBE 11.0007 X

#### Further approvals

INMETRO, GOST-R

#### Protection class

IP 65 (front)  
IP 54 (back)

### Technical data

#### Construction

Front-panel fitting

#### Display

- 12.1" TFT graphic display
- 262,144 colours
- Resolution XGA 1024 x 768 pixels
- Brightness 500 cd/m²
- Visible surface approx. 246 x 184 mm
- Contrast 700:1
- Touchscreen (resistive)

#### Background lighting

- LED technology
- Service life approx. 50,000 hours (at +25 °C)

#### Computer capacity

- LX800 processor, 500 MHz
- Compact Flash 4 GB
- Intel® Atom™ N270, 1.6 GHz optional
- 16 GB HD

#### Operating system

- Windows® XP Embedded (pre-installed)
- Windows® XP Professional (optional)

#### Keyboard (short-stroke keys)

- Alphanumeric key block
- 4 cursor keys
- 12 cursor keys
- 16 function keys able to be labelled with LEDs

#### Interfaces (basic version)

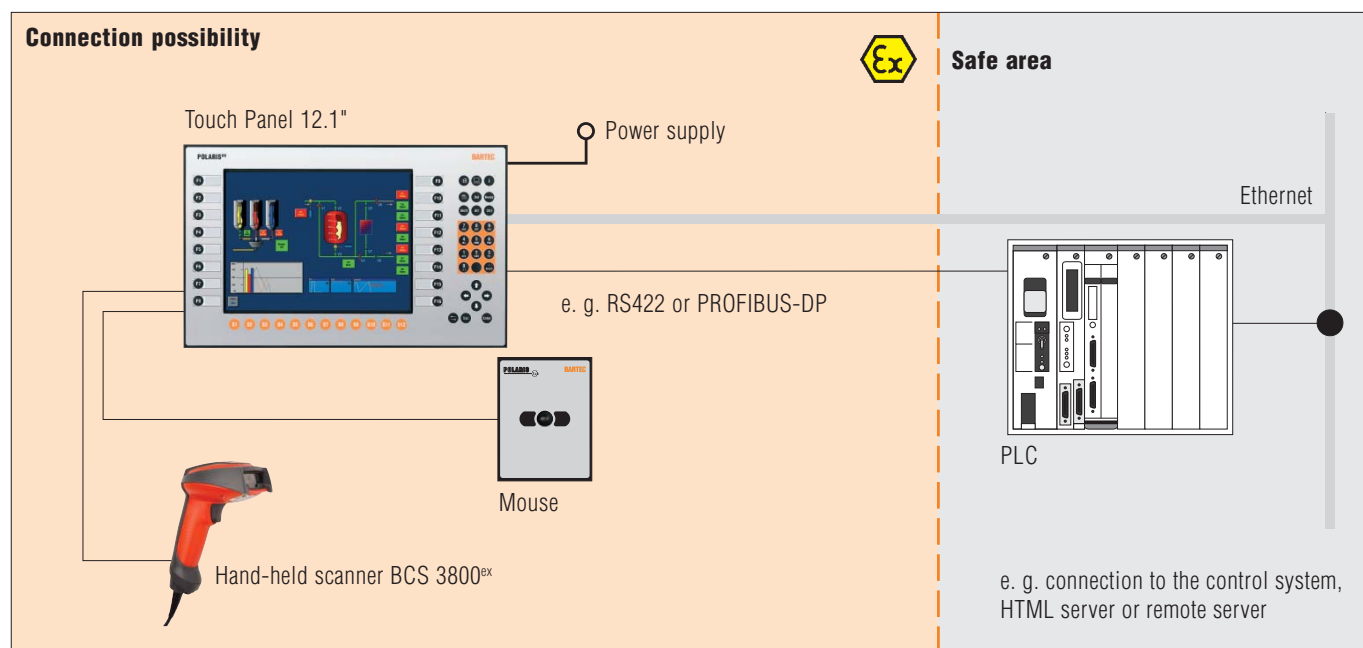
- 1 x Ex e Ethernet 100/10BaseT (option of optical fibres)
- 1 x Ex e RS422
- 1 x Ex i USB for Ex i memory stick
- 1 x Ex i PS/2 for intrinsically safe mouse

#### Optional interfaces

1 x Ex i Supply module for hand-held scanners

#### Dimensions (width x height x depth)

440 mm x 275 mm x approx. 130 mm



**Wall cut-out**

425 mm x 255 mm + 0.5 mm

**Weight**

approx. 18 kg

**Supply voltage**

DC 24 V ± 10 %

**Max. power consumption**

$P_{max} < 35 \text{ W}$

**Permissible ambient temperatures**

Storage -20 °C to +50 °C

Operation 0 °C to +50 °C

**Variant**

Operation -20 °C to +50 °C

on request (without external heating)

**Relative air humidity**

5 to 95 % non-condensing

**Vibration**

0.7 G/1 mm; 5 Hz - 500 Hz pulse in all 3 axes

**Shock**

15 G/11 ms pulse in all 3 axes

**Material**

Front Polyester foil on anodised aluminium plate (conditionally UV-resistant)

Back bichromated sheet steel

**Selection chart**

Version	Interfaces	Code no.
Touch Panel 12.1"	RS422	<b>00</b>
	BARTEC PROFIBUS-DP	<b>02</b>
	RS422, supply module for hand-held scanners	<b>04</b>
	BARTEC PROFIBUS-DP, supply module for hand-held scanners	<b>06</b>
	RS232	<b>09</b>
	TTY	<b>11</b>
	RS232, supply module for hand-held scanners	<b>13</b>
	TTY, supply module for hand-held scanners	<b>15</b>
	BARTEC PROFIBUS-DP, Ex d-USB	<b>33</b>
	Further Interface combinations on request	<b>XX</b>



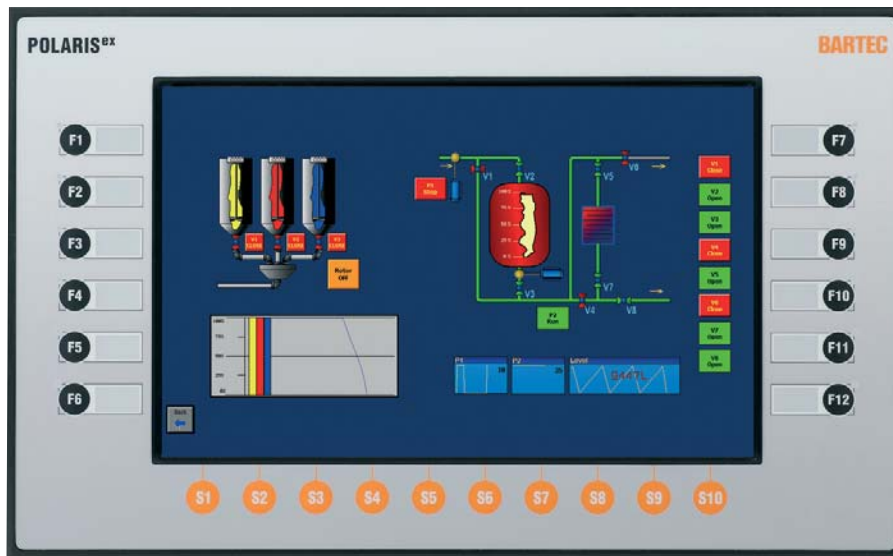
**Complete order no. 17-71V1-80 /X000**

Please insert correct code.

Technical data subject to change without notice.

You will find the accessories with order details on the accessories pages.





## POLARIS Touch Panel 12.1" W

### Features

- LED technology
- High screen resolution
- Touchscreen
- 1.6 GHz processor power
- Direct connection in hazardous areas
- Option of Windows® 7
- Integrated keyboard customisation

### Description

The POLARIS Touch Panel 12.1" W is an innovative new development of the POLARIS Touch Panel series.

The high-resolution display with LED backlighting and touchscreen allow intuitive and comfortable operation. Even with wide viewing angles or when lighting is poor, the state-of-the-art LED display technology assures the optimum in contrast.

This touch panel has been equipped as standard with the latest generation processor, the Intel® Atom™ with 1.6 GHz. The pre-installed operating system is Windows® XP and Windows® 7 is optionally possible. Thanks to the integrated keyboard customisation for Windows®, Siemens WinCC flexible®, RS View® or BMS-Graf-pro, the POLARIS Touch Panel can be used for all visualisation tasks. They can be connected to the control or the process control system through Ethernet, PROFIBUS-DP or various serial COM interfaces.

Of course, here too the user can work with the latest BMS-Graf-Pro Version 7, allowing for example the transfer of projects through Ethernet, the use of graphics lists and the integrated user administration.

Wired electrical connections are facilitated by integrated terminal compartments.

The front-panel fitting design ensures easy installation. On request, the devices are also available as ready-made system solutions in stainless steel enclosures for wall, floor or ceiling mounting.

They also feature an intrinsically safe USB interface for a USB Ex i flash drive. Intrinsically safe input devices can be connected also.

### Explosion protection

#### Ex protection type

**ATEX** Ex II 2G Ex db eb qb [ib op pr] IIC T4  
Ex II 2D Ex tb IIIC T120°C IP 6X

#### Certification

IBExU 05 ATEX 1117 X

#### IECEx

Ex db eb qb [ib] IIC T4  
Ex tb IIIC T120°C IP 6X

#### Certification

IECEx IBE 11.0007 X

#### Further approvals

INMETRO, GOST-R

#### Protection class

IP 65 (front)

IP 54 (back)

### Technical data

#### Construction

Front panel fitting

#### Display

- 12.1" W graphics-capable TFT colour display
- 262,144 colours
- WXGA resolution, 1280 x 800 pixels
- Brightness 400 cd/m²
- Visible surface approx. 264 x 166 mm
- Contrast 1200:1
- touchscreen (resistive)

#### Background lighting

- LED technology
- Service life approx. 50,000 hours (at +25 °C)

#### Computer capacity

Intel® Atom™ N270, 1.6 GHz  
1 GB RAM/SSD 16 GB HD

#### Operating system

- Windows® XP Professional (pre-installed)
- Windows® 7 (optional)

#### Keyboard (short-stroke keys)

- 10 cursor keys
- 12 function keys able to be labelled with LEDs

#### Interfaces (basic version)

- 1 x Ex e Ethernet 100/10BaseT (option of optical fibres)
- 1 x Ex e RS422
- 1 x Ex i USB for Ex i memory stick
- 1 x Ex i PS/2 for intrinsically safe mouse

#### Optional interfaces

1 x Ex i supply module for hand-held scanners

#### Dimensions (width x height x depth)

400 mm x 246 mm x approx. 130 mm

#### Wall cut-out

386 mm x 226 mm + 0.5 mm

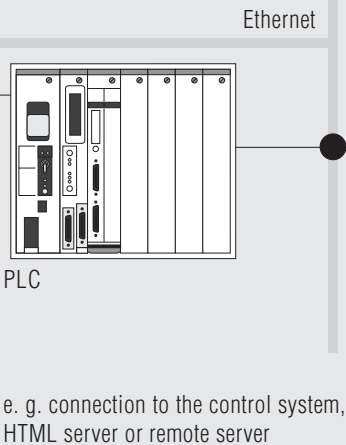
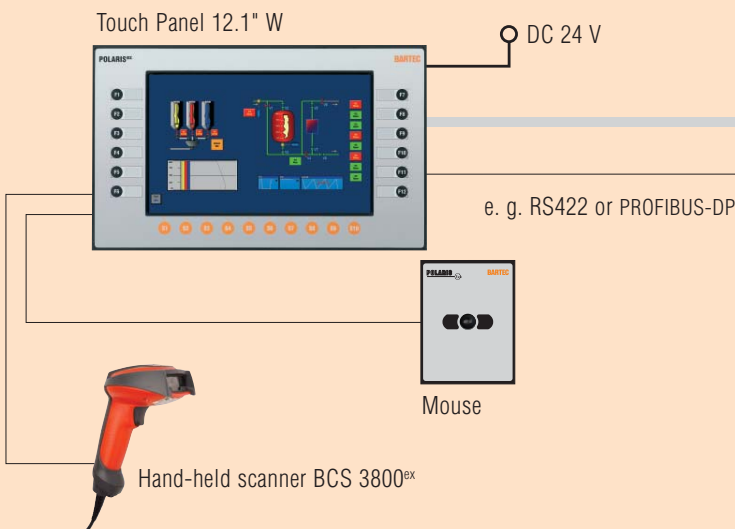




Connection possibility



Safe area



Weight

approx. 14 kg

Supply voltage

DC 24 V  $\pm$  10 %

Max. power consumption

$P_{max} < 35$  W

Permissible ambient temperatures

Storage -20 °C to +50 °C

Operation 0 °C to +50 °C

Variant

Operation -20 °C to +50 °C  
on request (without external heating)

Relative air humidity

5 to 95 % non-condensing

Vibration

0.7 G/1 mm; 5 Hz - 500 Hz pulse in  
all 3 axes

Shock

15 G/11 ms pulse in all 3 axes

Material

Front Polyester foil on  
anodised aluminium plate  
(conditionally UV-resistant)  
Back bichromated sheet steel

Selection chart

Version	Interfaces	Code no.
Touch Panel 12.1" W	RS422	<b>00</b>
	BARTEC PROFIBUS-DP	<b>02</b>
	RS422, supply module for hand-held scanners	<b>04</b>
	BARTEC PROFIBUS-DP, supply module for hand-held scanners	<b>06</b>
	RS232	<b>09</b>
	TTY	<b>11</b>
	RS232, supply module for hand-held scanners	<b>13</b>
	TTY, supply module for hand-held scanners	<b>15</b>
	BARTEC PROFIBUS-DP, Ex d-USB	<b>33</b>
	USB Ex e	<b>36</b>
	Further Interface combinations on request	<b>XX</b>

➔ **Complete order no. 17-71V1-B0**  **/P000**

Please insert correct code.

Technical data subject to change without notice.

You will find the accessories with order details on the accessories pages.



## Mouse

### Explosion protection

#### Ex protection type

**ATEX** II 2G Ex ib IIC T4  
 II 2D ib IIIC T120 °C IP 6X

#### Certification

IBExU 05 ATEX 1117 X

#### IECEX

Ex ib IIC T4  
Ex ib IIIC T120°C IP 6X

#### Certification

IECEX IBE 11.0007 X

#### Further approvals

INMETRO, GOST-R

#### Protection class

IP 65

### Technical data

#### Construction

Front panel fitting

#### Material

Polyester foil on aluminium sheet  
(conditionally UV-resistant)

#### Dimensions

130 mm x 170 mm (width x height)

#### Wall cut-out

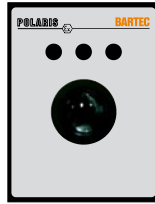
100 mm x 140 mm

#### Installation depth

15 mm

#### Weight

approx. 270 g



## Trackball Joystick

### Explosion protection

#### Ex protection type

**ATEX** II 2G Ex ib IIC T4  
 II 2D ib IIIC T120 °C IP 6X

#### Certification

IBExU 05 ATEX 1117 X

#### IECEX

Ex ib IIC T4  
Ex ib IIIC T120°C IP 6X

#### Certification

IECEX IBE 11.0007 X

#### Further approvals

INMETRO, GOST-R

#### Protection class

IP 65

### Technical data

#### Construction

Front panel fitting

#### Material

Polyester foil on aluminium sheet  
(conditionally UV-resistant)

#### Dimensions

130 mm x 170 mm (width x height)

#### Wall cut-out

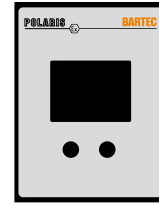
100 mm x 140 mm

#### Installation depth

43 mm

#### Weight

approx. 500 g



## Touchpad

### Explosion protection

#### Ex protection type

**ATEX** II 2G Ex ib IIC T4  
 II 2D ib IIIC T120 °C IP 6X

#### Certification

IBExU 05 ATEX 1117 X

#### IECEX

Ex ib IIC T4  
Ex ib IIIC T120°C IP 6X

#### Certification

IECEX IBE 11.0007 X

#### Further approvals

INMETRO, GOST-R

#### Protection class

IP 65

### Technical data

#### Construction

Capacitive touchpad for front panel fitting

#### Material

Polyester foil on aluminium sheet  
(conditionally UV-resistant)

#### Dimensions

130 mm x 170 mm (width x height)

#### Wall cut-out

100 mm x 140 mm

#### Installation depth

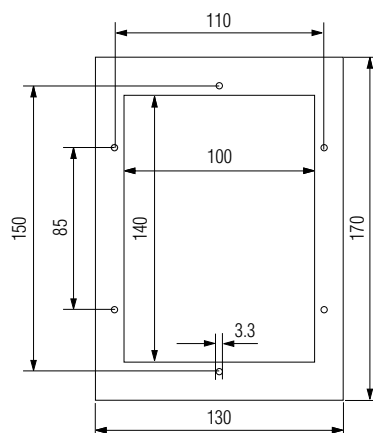
15 mm

#### Weight

approx. 250 g

#### Dimensions and wall cut-out (mm)

- Mouse
- Trackball
- Joystick
- Touchpad



all hole diameter: 3.3 mm

### Order no.

**Mouse** **17-71VZ-1000**

**Trackball** **17-71VZ-2000**








**Joystick**  
without button **17-71VZ-8000**  
with button **17-71VZ-9000**

**Touchpad** **17-71VZ-3000**

Technical data subject to change without notice.



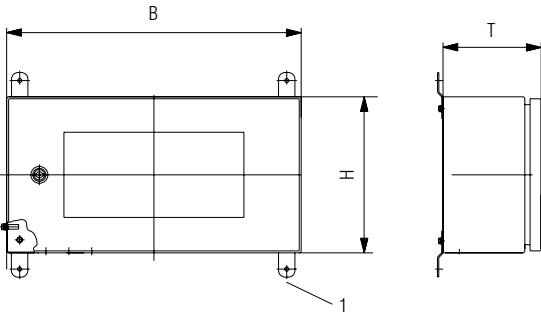


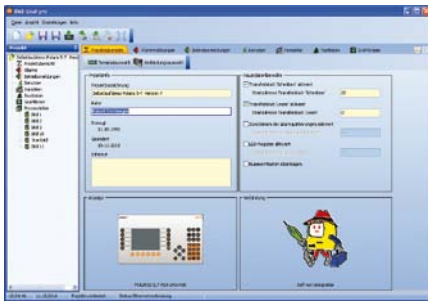
## Selection chart Accessories

Illustration	Description	Order no.
	<b>Ex i USB-Stick</b> ATEX/IECEx Zone 1 and Zone 21 Ex i memory stick 4 GB Ex i recovery stick	<b>17-71VZ-5000/0100</b> on request
	<b>Reinforcement frame</b> Touch Panel 5.7" Touch Panel 10.4"/12.1" W Touch Panel 12.1"	<b>05-0205-0006</b> <b>05-0205-0008</b> <b>05-0205-0007</b>
	<b>Mounting clamps set</b> 4 pieces 6 pieces	<b>05-0091-0111</b> <b>05-0091-0112</b>
	<b>Label strip</b> white DIN A4 sheet, for laser printer	<b>03-3600-0258</b>
	<b>LAN STP cable</b> CAT.7 4 x 2 x 23 AWG, outer diameter: 7.9 mm CAT.7 4 x 2 x 22 AWG, outer diameter: 18 mm; armoured Note: Additional cable glands for armouring necessary	<b>02-4082-0002</b> <b>02-4082-0004</b>
	<b>External converter</b> Converter external RS232 - RS422, Non Ex	<b>03-9600-0258</b>
	<b>MPI interface</b> Converter external MPI - RS422, Non Ex	<b>17-28TZ-0007</b>
	<b>Original packing</b> Touch Panel 5.7" Touch Panel 10.4"/12.1" W Touch Panel 12.1"	<b>04-9035-0004</b> <b>04-9035-0005</b> <b>04-9035-0006</b>

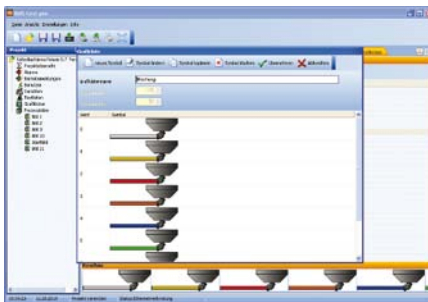


# Selection chart stainless steel enclosure "Standard"

Illustration	Description	Order no.
  	<p><b>Stainless steel enclosure "Standard"</b></p> <p><b>Technical data</b></p> <p>Material                      Stainless steel 1.4404; AISI 316 L</p> <p>Surface                        Brushed</p> <p>Protection class            IP 65</p> <p>■ <b>for floor mounting with stand</b> for ATEX Zone 1</p> <p>Dimensions in mm (B x H x T)</p> <p>Touch Panel 5.7"                      500 x 280 x 200</p> <p>Touch Panel 10.4"/12.1" W            560 x 320 x 200</p> <p>Touch Panel 12.1"                      600 x 350 x 200</p> <p>Complete solution with installed equipment</p> <p>■ <b>for wall mounting including mounting straps</b> for ATEX Zone 1</p> <p>Dimensions in mm (B x H x T)</p> <p>Touch Panel 5.7"                      500 x 280 x 200</p> <p>Touch Panel 10.4"/12.1" W            560 x 320 x 200</p> <p>Touch Panel 12.1"                      600 x 350 x 200</p> <p>Complete solution with installed equipment</p> <p>    1 mounting strap for wall mounting </p>	<p><b>07-56D7-9011/9002</b></p> <p><b>07-56D7-9611/9002</b></p> <p><b>07-56D7-9711/9002</b> on request</p> <p><b>07-56D7-9011/9001</b></p> <p><b>07-56D7-9611/9001</b></p> <p><b>07-56D7-9711/9001</b> on request</p>



Project engineering



Graphics list

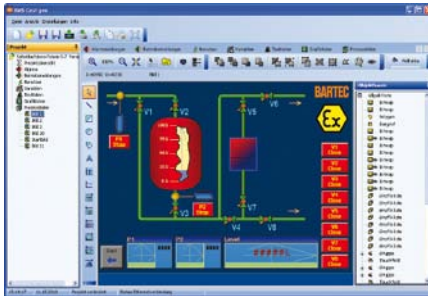


Image editor

## BMS-Graf-pro 7 Visualization Software

### Features

- Intuitive operation
- Touch-sensitive
- Comfortable handling
- Downward compatibility
- Use of old project data
- Process connection through Ethernet
- User administration
- Graphics lists
- Operating messages

### Description

The BMS-Graf-pro programming package enables a simple and comfortable creation of process visualisation for POLARIS Comfort and POLARIS Professional.

Alarm signals, operating messages, variables, user administration, text lists, and graphics lists can be generated in one project for animation and process images. With the aid of high-performance objects, from the line to touch buttons, the process images can be conveniently produced on a user friendly interface.

The BMS Graf pro Runtime is optimised to the quickest reaction times. This benefits the presentation of the process images and also the communication for control. Communication protocols such as Modbus/TCP support this optimisation too.

In the course of the development, particular attention was paid to ensuring that an existing project from older BMS Graf and BMS Graf pro versions could be opened easily and if necessary transferred into the new device with very little adjustments required.

### Technical data

#### Technical characteristic figures

Images	500
Fields per image	100
Variables per image	100

#### Graphics objects

Curves	50
Graphics lists	over 100
Text lists	over 100

#### Variables

Messages	over 1000
Message text	250
Size of message buffer	2000

#### User administration

User levels	25
-------------	----

#### Communication

PROFIBUS DP  
Modbus/TCP Client  
Modbus RTU Master  
Modbus RTU Slave

#### System requirements

- Windows® XP or higher
- Processor at least 2 GHz
- Graphics at least XGA

#### POLARIS requirements

- Windows® XP Embedded or higher
- Processor at least 500 MHz
- Graphics at least VGA

**Order no.**  
**17-28TF-0075**

for all available languages.

Technical data subject to change without notice.

## Contactos/Contacts:

### Comercial/Commercial:

Fernando Mena Costa

e-mail: [fcosta@bhb.pt](mailto:fcosta@bhb.pt)

Tel: (+351) 21 843 64 00

Fax: (+351) 21 843 64 09

### Assistência/Service:

Patricia Costa

e-mail: [ppcosta@bhb.pt](mailto:ppcosta@bhb.pt)

Tel: (+351) 21 843 64 00

