

ComEx DATASHEET

JUNHO 2013

Tel: (+351) 21 843 64 00
Fax: (+351) 21 843 64 09
geral@bhb.pt www.bhb.pt



ComEx control stations

Features

- 3 standard enclosures
- Easy to install
- Extremely flexible
- Customer-tailored solutions

Description

ComEx is a flexible system offering standard as well as customer-specific local control and indicating units.

You have the choice between three standard enclosures which can accommodate up to three different control and indicating devices. Combinations of up to three ComEx enclosures are possible.

Either stuffing box glands in M20 x 1.5 and M25 x 1.5 made of plastic or cable glands made of metal are available for the electrical connection.

The plastic glands require no lock nuts.

Metal glands are screwed into a metal earth plate sheet inside of the enclosure. Maximum amount of cable glands: two off M20.

To ensure easier operation on site, each enclosure can be equipped with an individual info-label.

For offshore applications special oil-resistant attachments are available.

➤ Explosion protection

Ex protection type

- ⊕ II 2G Ex ed IIC T6
- ⊕ II 2D Ex tD A21 IP 67 T 80 °C

Class I, Zone 1 AEx ed IIC, Ex ed IIC
Class I, Division 2 Groups A, B, C, D
Ex ed IIC, T6

Certification

PTB 00 ATEX 1068
UL E184198
IECEx PTB 08.0022
INMETRO 2004 EC 02 CP003

Permissible ambient temperature

-55 °C to +60 °C
(-20 °C to +60 °C for Zone 21 and 22)

➤ Technical data

Connection

Terminals 2.5 mm²

PE conductor terminals

4 x 2.5 mm²

Rated insulation voltage

max. AC 690 V

Nominal current

max. 16 A

Cable entry

M 20 x 1.5 for cable Ø 6 to 13 mm
M 25 x 1.5 for cable Ø 7 to 12 mm
M 25 x 1.5 for cable Ø 13 to 21 mm

Enclosure

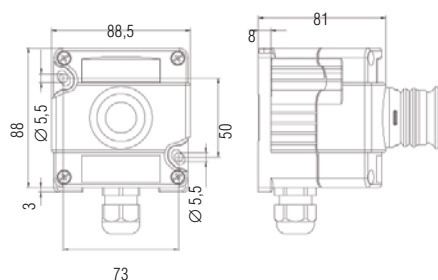
Thermoplastic

Protection class

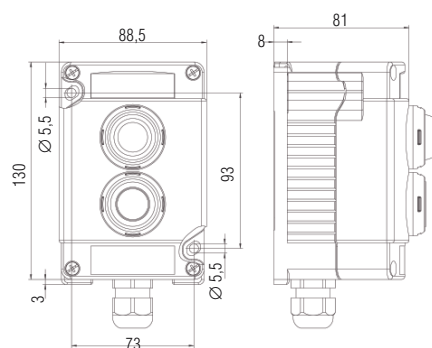
IP 66/IP 67



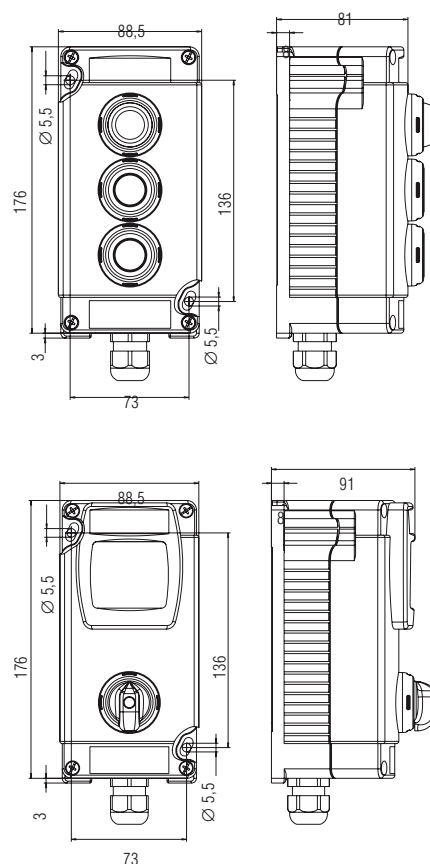
Control unit, single Type 07-3511-....



Control station, double Type 07-3512-....



Control station, triple Type 07-3513-....



1

2

3

4

5

6

7



Selection chart

Wiring diagram	Description	Weight	➔ Order no.
	1 pushbutton 1 NO + 1 NC incl. labels red, green, yellow, white	0.33 kg	07-3511-10P74
	1 NOT/AUS Emergency Stop 1 NO + 1 NC marked NOT/AUS and Emergency-Stop	0.36 kg	07-3511-10N84
	1 Mushroom Keyswitch 1 NO + 1 NC with key to reset	0.40 kg	07-3511-10K34
	1 Selector switch 1 NO + 1 NC, 2 position with 2 stops 0 and I, latching	0.35 kg	07-3511-10S94
	1 Selector switch 1 NO + 1 NC, 3 position with 3 stops I - 0 - II, latching	0.35 kg	07-3511-10S04
	1 Selector switch 1 NO + 1 NC, 3 position with 3 stops I - 0 - II, momentary-contact	0.35 kg	07-3511-10S14
	1 Lamp red green yellow white	0.35 kg	07-3511-10LRR 07-3511-10LGG 07-3511-10LYY 07-3511-10LWW
	1 Mushroom Pushbutton, black 1 NO + 1 NC	0.35 kg	07-3511-10P84
	1 Keyswitch 1 NO + 1 NC lockable in both positions	0.40 kg	07-3511-10K04
	1 Keyswitch 1 NO + 1 NC lockable in the pushed-in-position	0.40 kg	07-3511-10K14
	1 Keyswitch 1 NO + 1 NC lockable in the initial position	0.40 kg	07-3511-10K24



Selection chart

Wiring diagram	Description	Weight	➔ Order no.
	2 pushbuttons 1 NO + 1 NC each including key labels	0.50 kg	07-3512-10P74P74
	1 indicator lamp, 1 pushbutton with indicated lamp red green yellow white blue 1 NO + 1 NC	0.52 kg	07-3512-10LRRP74 07-3512-10LGGP74 07-3512-10LYYP74 07-3512-10LWWP74 07-3512-10LBBP74
	1 indicator lamp, 2 pushbuttons with indicated lamp red green yellow white 1 NO + 1 NC each	0.70 kg	07-3513-10LRRP74P74 07-3513-10LGGP74P74 07-3513-10LYYP74P74 07-3513-10LWWP74P74
	3 pushbuttons 1 NO + 1 NC each including key labels	0.68 kg	07-3513-10P74P74P74
	2 pushbuttons 1 emergency stop button 1 NO + 1 NC each	0.70 kg	07-3513-10P74P74N84

1

2

3

4

5

6

7



Selection chart Actuator elements

Illustration	Description	Code no.	Illustration	Description	Code no.
	Pushbutton with rubber membrane and with five loose labels: red, green, yellow, white, black	P7		Lock (DOM) lockable in both positions, key retractable in both positions lock 4 A 185	K0
	Double pushbutton actuator with rubber membrane, 5 loose labels in red, green, yellow, white, black	P2		lockable in its depressed position, key retractable in its depressed position lock 4 A 185	K1
	Emergency Stop marked 'NOT-AUS EMERGENCY STOP'	N8		Lock (RONIS) lockable in both positions key retractable in both positions lock 445	K4
	Locking mushroom push button pushed in without a key unlocked with a key DOM lock 4 A 185	K3		Lock (RONIS) Lock 455	E0
	Mushroom pushbutton, black	P8		2 switching positions 0-I latching, key retractable	E1
	Position selector switch 2 positions, 0 + I latching	S9		2 switching positions 0-I momentary contact, position I key not retractable	E2
	Position selector switch 3 positions I-0-II I + II latching I + II momentary-contact I latching, II momentary-contact I momentary-contact, II latching	S0 S1 S2 S3		Lamp red green yellow white blue	LR LG LY LW LB
				Illuminated button actuator red green yellow white blue	TR TG TY TW TB
				Blanking plug black, to cover unused holes in the front panel	B1
				Potentiometer actuating element black, scale 1 - 10	D0



ComEx control stations, Stainless steel

Features

- Standard enclosures
- Corrosion resistance
- Customer-tailored solutions

Description

It's a question of control, signalling and display units fitted into stainless steel standard enclosures. The enclosures are certified for use in Zone 1 and 2 as well as Zone 21 and 22.

The equipment is highly corrosion resistant due to high quality stainless steels. Either plastic or metal glands are used for electrical connection.

On request, BARTEC will equip the enclosures with corresponding control, signalling and display units and cable glands and supply the required labels.

Explosion protection

Ex protection type

- Ex II 2G Ex edm IIC T6
- Ex II 2D Ex tD A21 IP 65 T 80 °C

Certification

PTB 02 ATEX 1159 for II 2G
IBExU00ATEX1079 for II 2D

Permissible ambient temperature

-55 °C to +60 °C
(-20 °C to +60 °C for II 2D)

Technical data

Connection

Terminals 2.5 mm²

Bore hole for bushings

standard version:

1 x M20 x 1.5

special versions:

2 x M20 x 1.5 up to max. 1 x M40 x 1.5

Enclosure

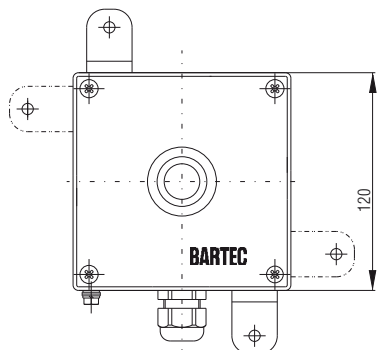
High-quality stainless steel 316L, 312L

Protection class

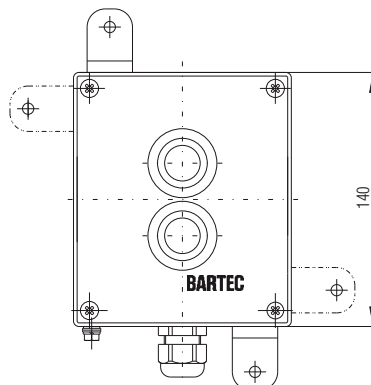
IP 65



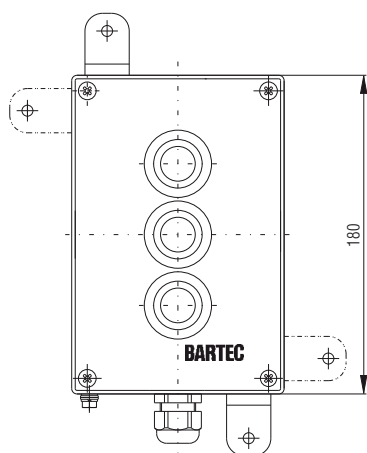
Control unit, single Type 07-3232-1275/....



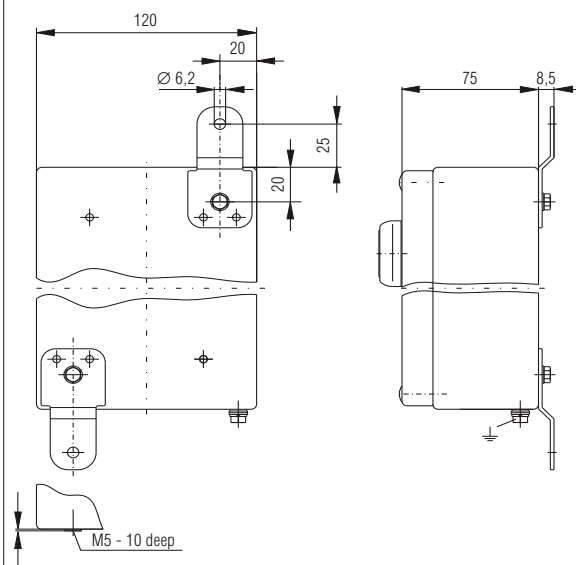
Control station, double Type 07-3132-1475/....



Control station, triple Type 07-3132-1875/....



Mounting dimensions



1

2

3

4

5

6

7

Contactos/Contacts:

Comercial/Commercial:

Fernando Mena Costa
e-mail: fcosta@bhb.pt
Tel: (+351) 21 843 64 00
Fax: (+351) 21 843 64 09

Assistência/Service:

Patricia Costa
e-mail: ppcosta@bhb.pt
Tel: (+351) 21 843 64 00

